



# ComponentSpace

## SAML for ASP.NET

### Salesforce

### Service Provider

## Integration Guide

## Contents

Introduction.....	1
Single Sign-On Settings .....	1
Identity Provider Configuration .....	5
SP-Initiated SSO .....	6
IdP-Initiated SSO .....	7
SAML Logout.....	9

## Introduction

This document describes integration with Salesforce as the service provider.

For information on configuring Salesforce for SAML SSO, refer to the following articles.

[https://developer.salesforce.com/docs/atlas.en-us.sso.meta/sso/sso\\_about.htm](https://developer.salesforce.com/docs/atlas.en-us.sso.meta/sso/sso_about.htm)

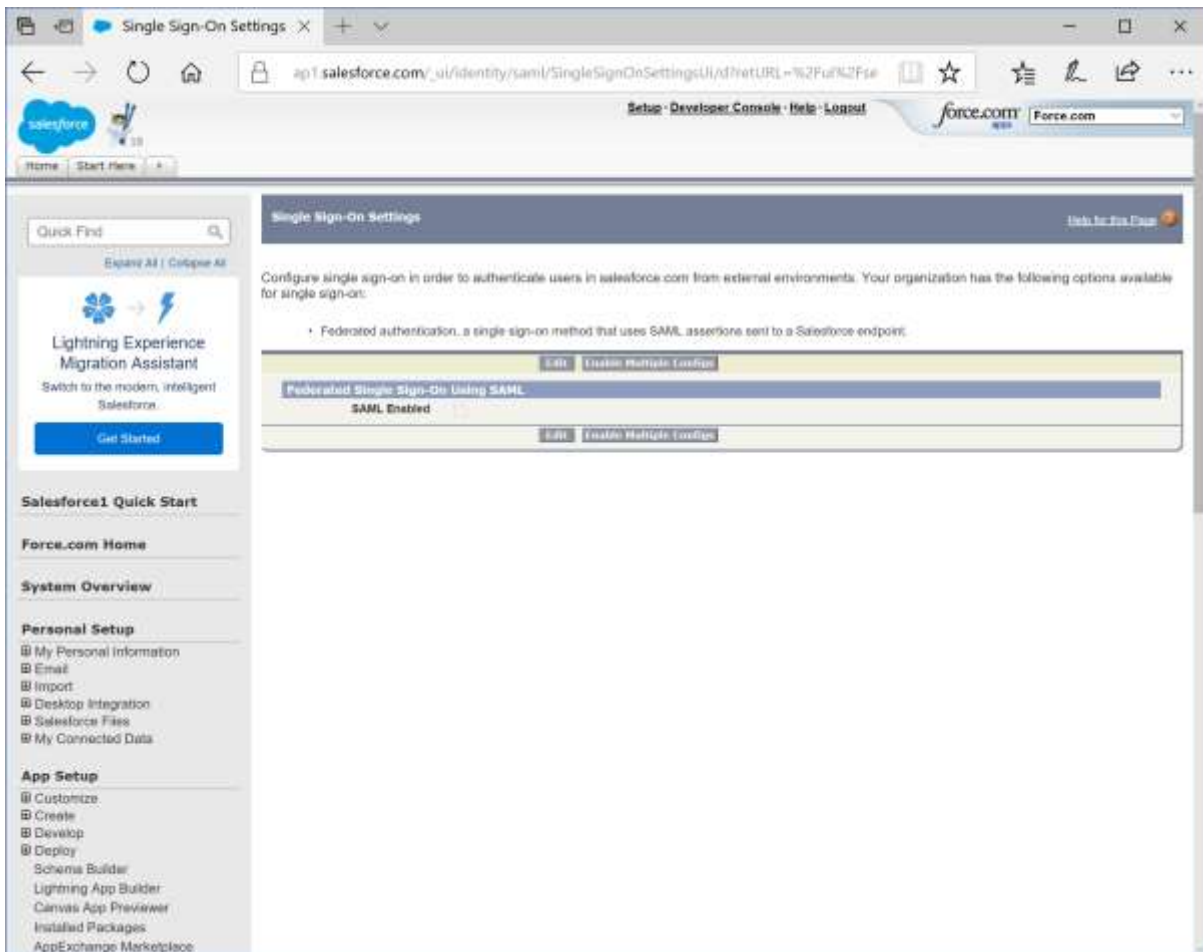
[https://resources.docs.salesforce.com/208/latest/en-us/sfdc/pdf/salesforce\\_single\\_sign\\_on.pdf](https://resources.docs.salesforce.com/208/latest/en-us/sfdc/pdf/salesforce_single_sign_on.pdf)

## Single Sign-On Settings

Log into Salesforce as an administrator.

<https://login.salesforce.com>

Select Setup > Administration Setup > Security Controls > Single Sign-On Settings.



Enable SAML and specify the identity provider's configuration.

The issuer is the name of the identity provider.

For example:

<https://ExampleIdentityProvider>

## ComponentSpace SAML for ASP.NET Salesforce Service Provider Integration Guide

The identity provider Login URL is the SSO service that receives the SAML authn request as part of SP-initiated SSO.

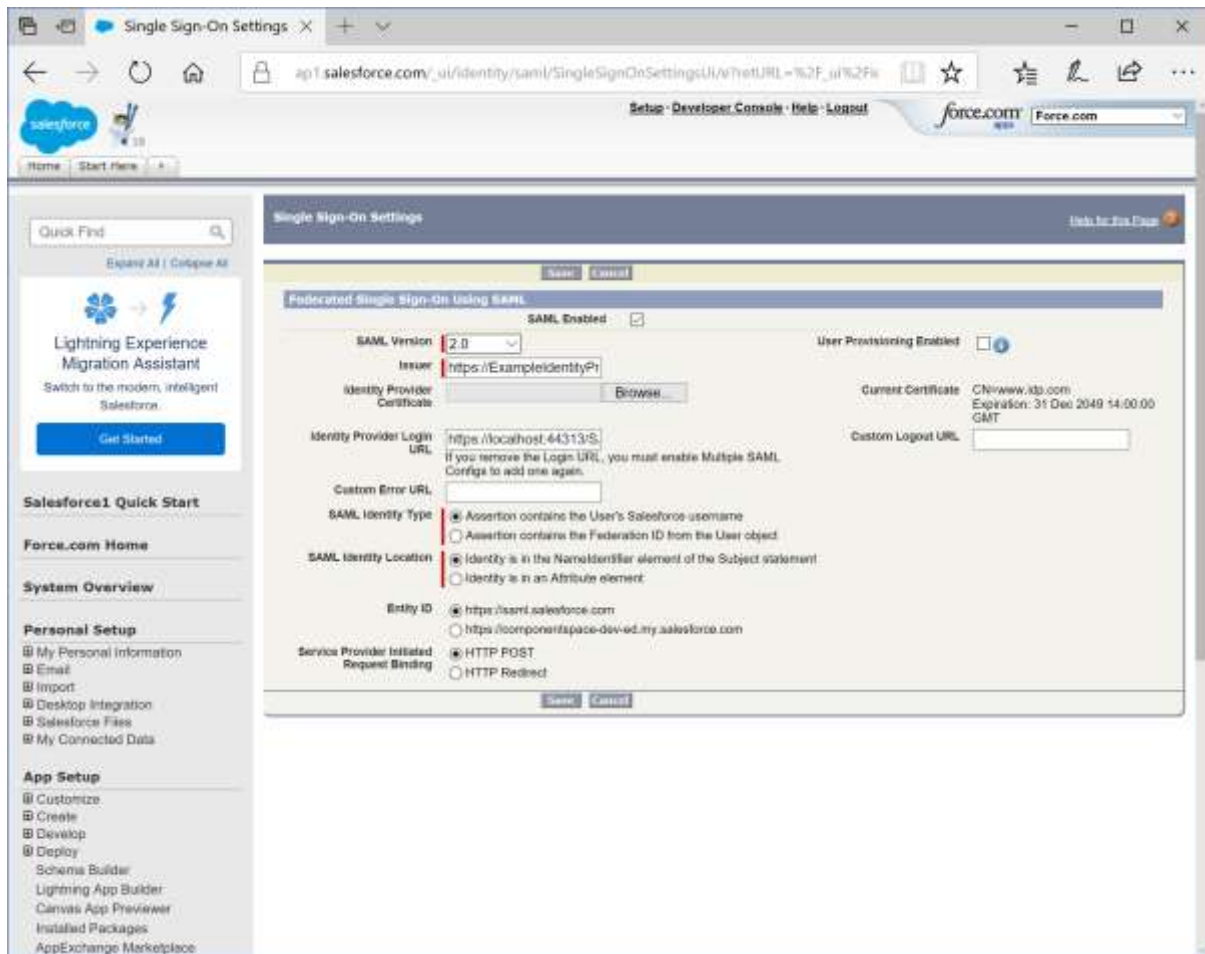
For example:

<https://localhost:44313/SAML/SingleSignInService>

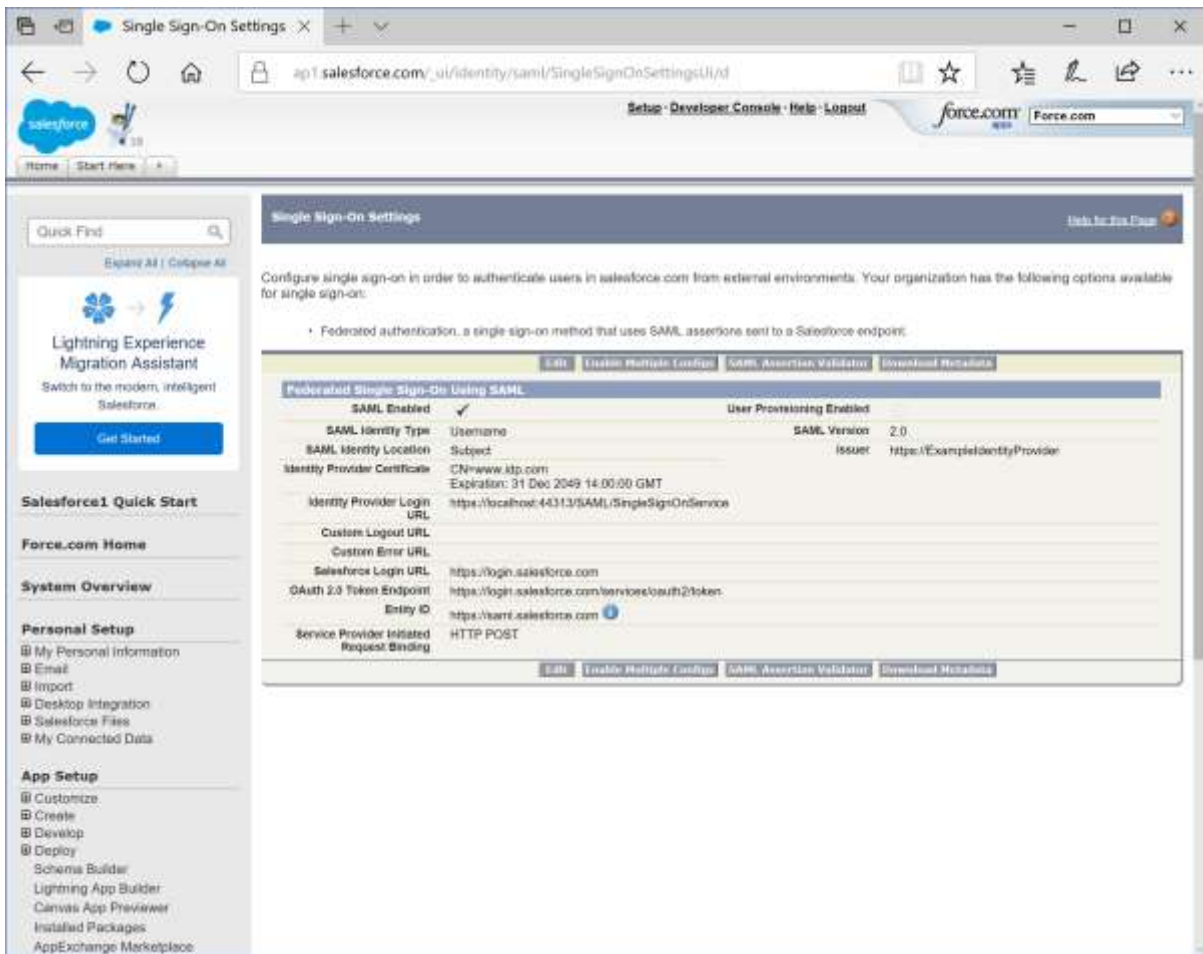
The certificate is the identity provider certificate used to verify signatures.

For example:

idp.cer



Save the changes.

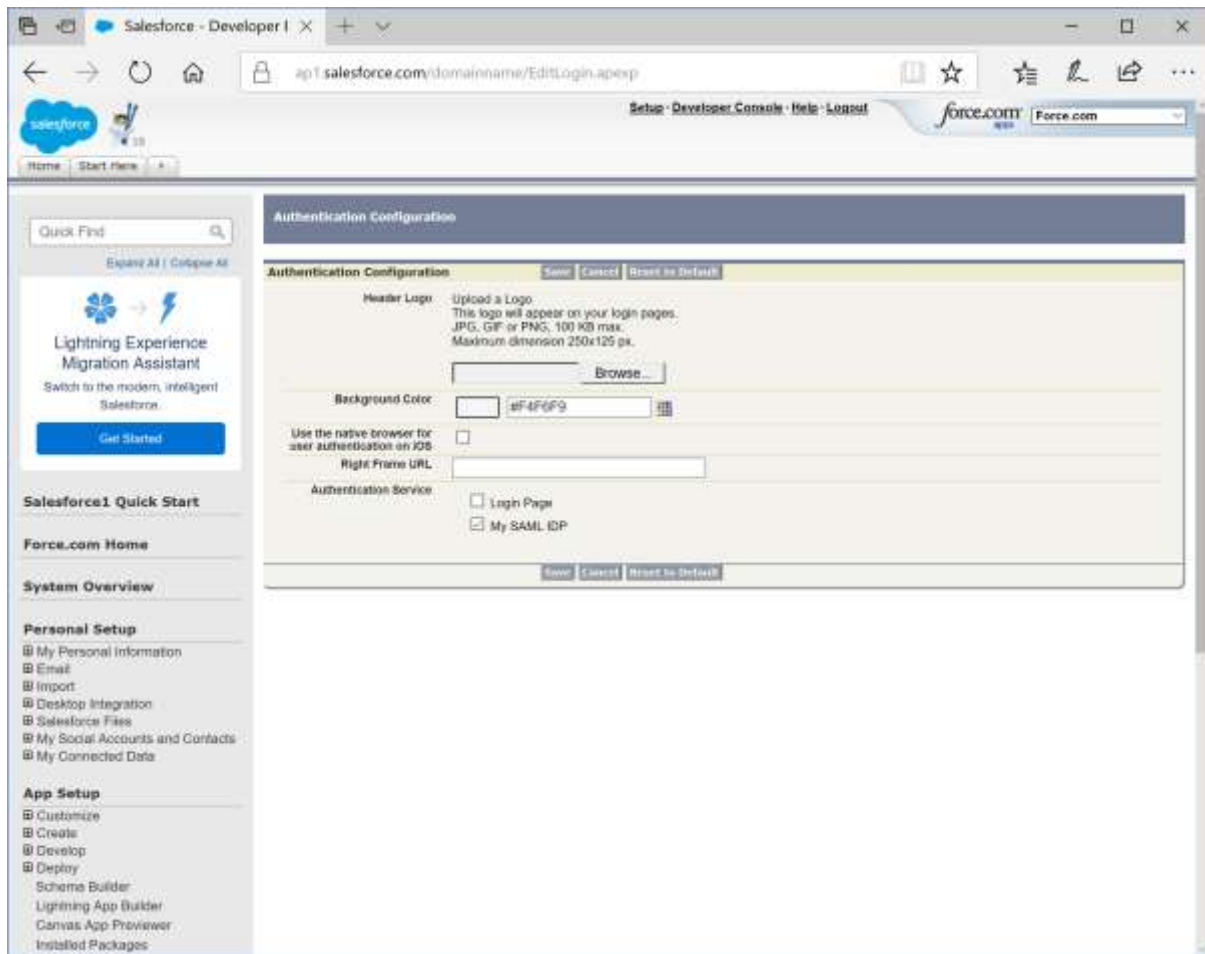


Download the metadata as this is used to configure the identity provider.

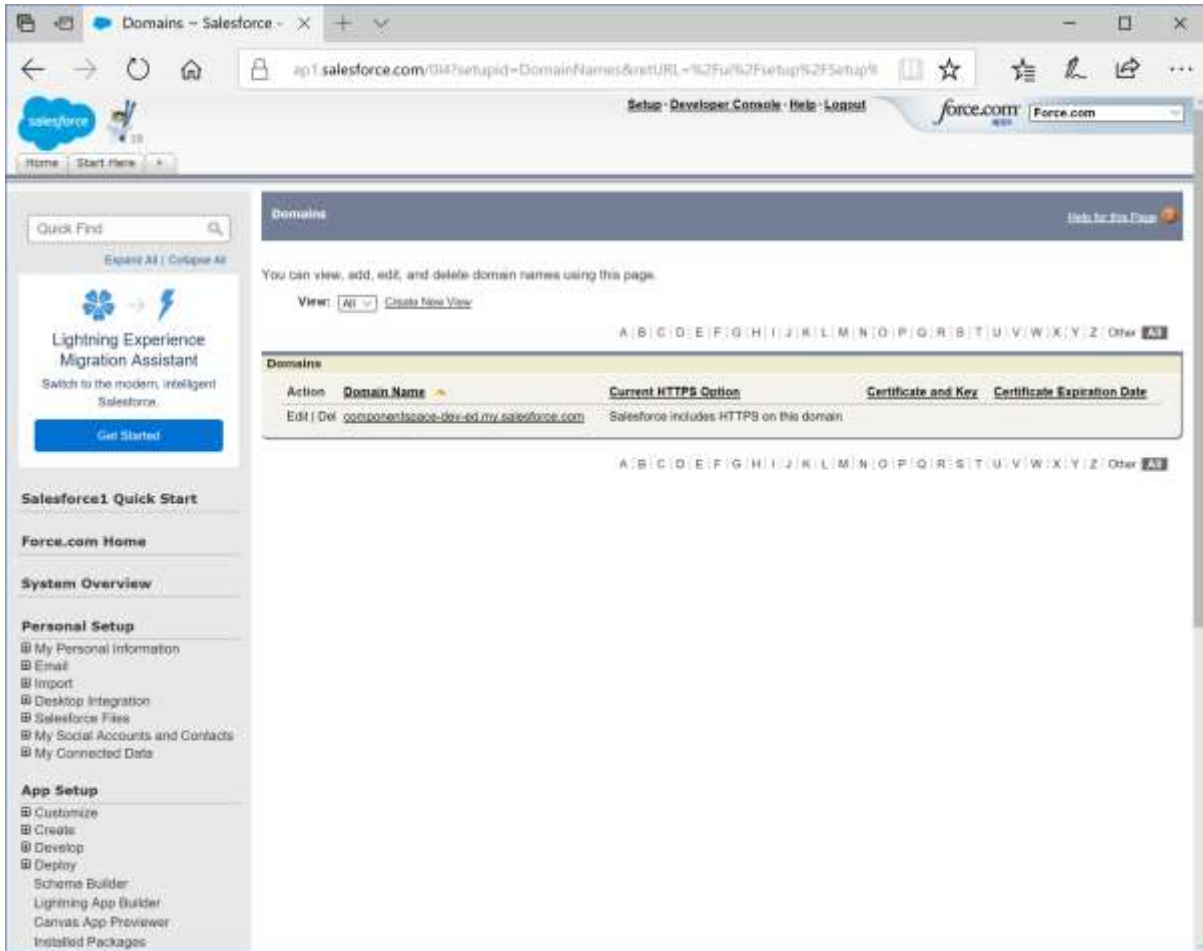
For SP-initiated SSO, select Setup > Domain Management > My Domain.

Ensure the Authentication Service is set to My SAML IDP.

# ComponentSpace SAML for ASP.NET Salesforce Service Provider Integration Guide



Take note of the domain name.



## Identity Provider Configuration

The following partner service provider configuration is included in the example identity provider's SAML configuration.

```
<PartnerServiceProvider
  Name="https://saml.salesforce.com"
  Description="Salesforce"
  WantAuthnRequestSigned="true"
  SignAssertion="true"
  AssertionConsumerServiceUrl="https://login.salesforce.com">
  <PartnerCertificates>
    <Certificate FileName="Certificates\salesforce.cer"/>
  </PartnerCertificates>
</PartnerServiceProvider>
```

Some of this information was extracted from the Salesforce SAML metadata.

The partner certificate file corresponds to the signing certificate included in the metadata.

Ensure the PartnerName specifies the correct partner service provider.

```
<add key="PartnerName" value="https://saml.salesforce.com"/>
```

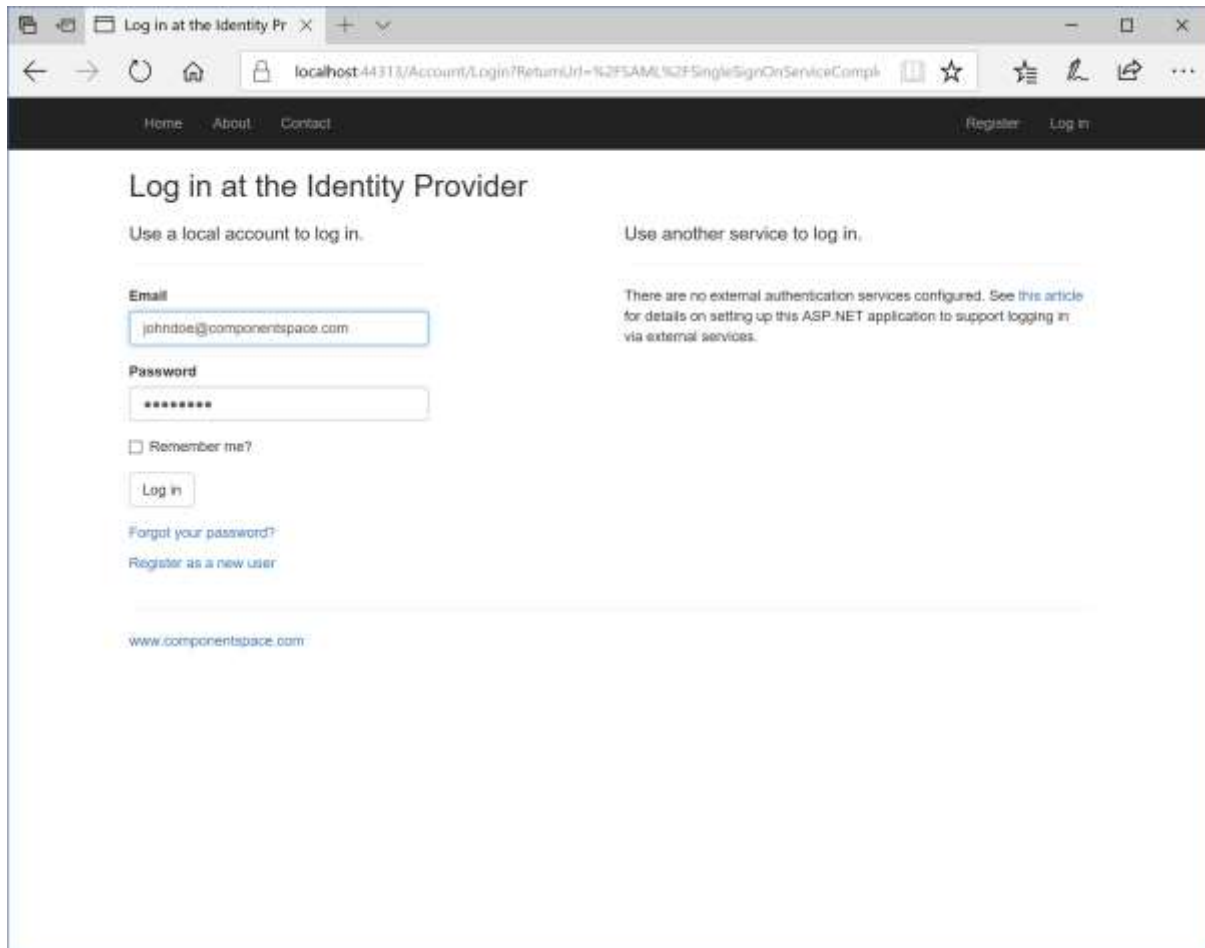
## SP-Initiated SSO

Browse to domain URL.

For example:

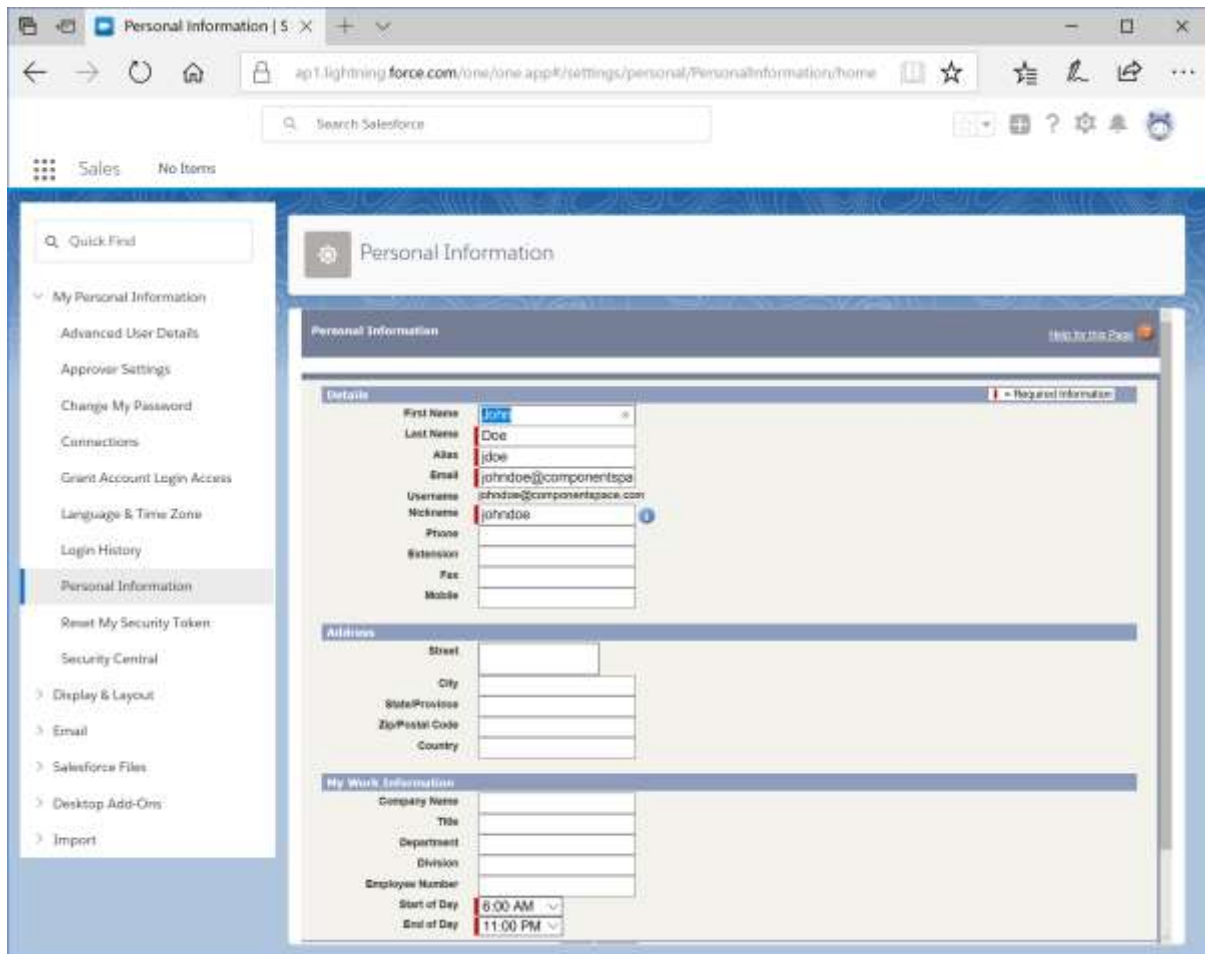
<http://componentspace-dev-ed.my.salesforce.com/>

Log in at the example identity provider.



The user is automatically logged in at the service provider.

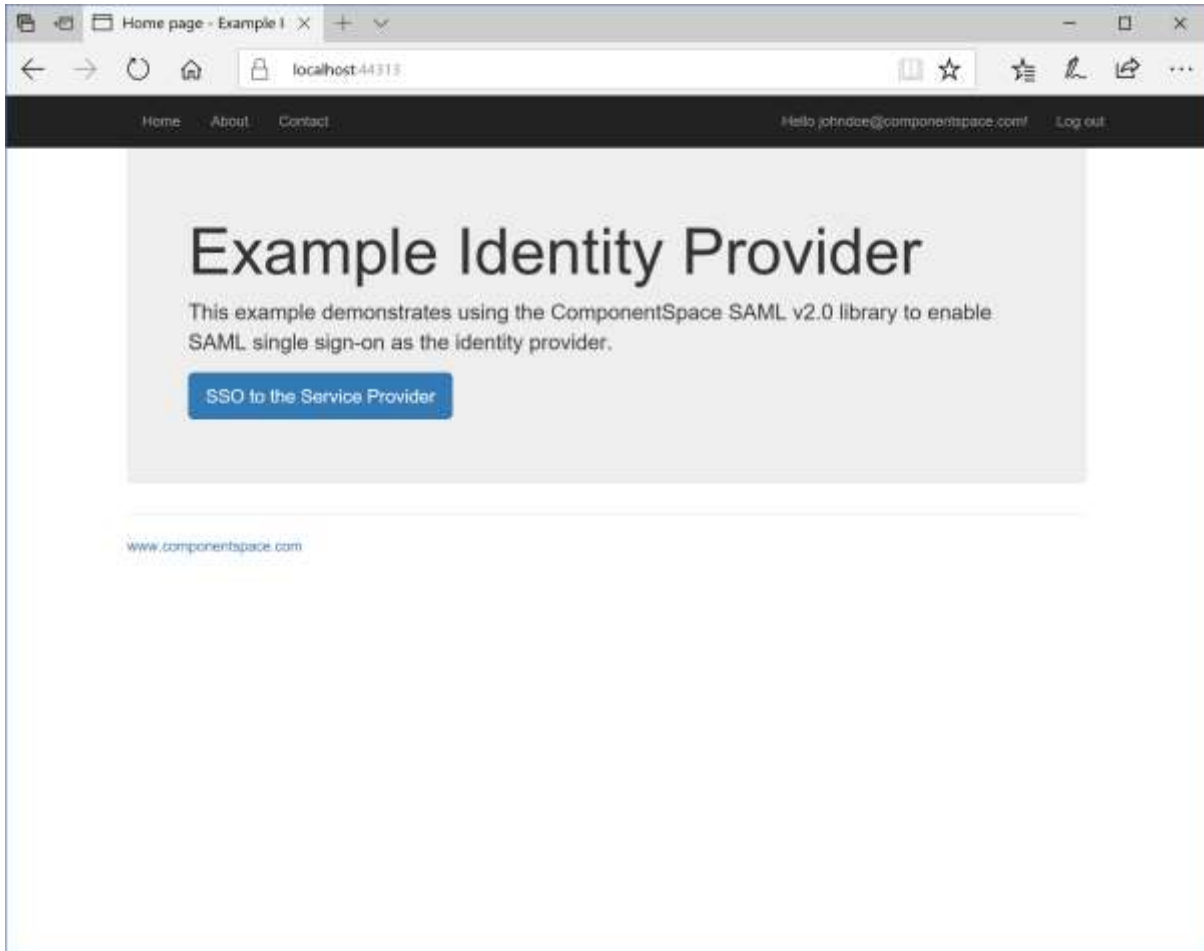




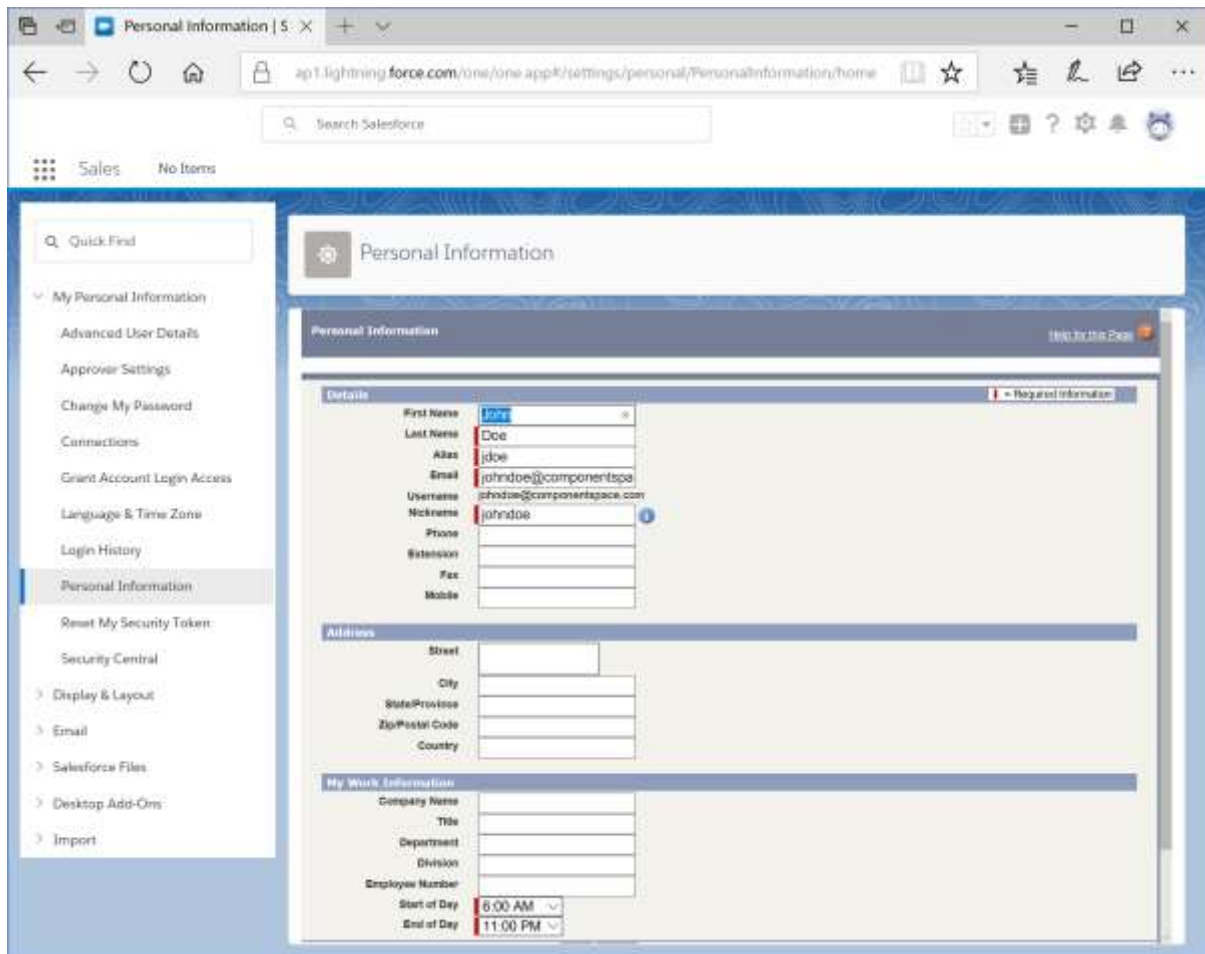
## IdP-Initiated SSO

Browse to the example identity provider and login.

Click the SSO to the Service Provider button.



The user is automatically logged in at the service provider.



## SAML Logout

Salesforce doesn't support SAML logout.